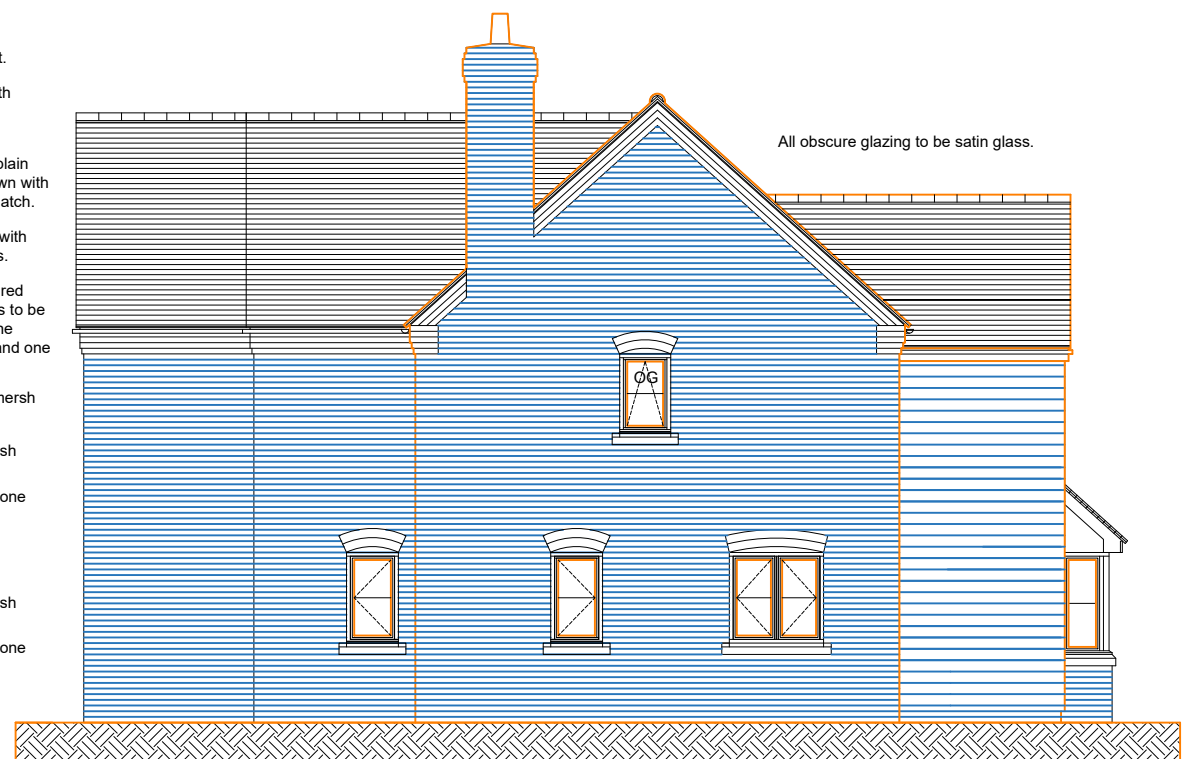




FRONT EAST ELEVATION

- Terracotta cannon chimney pot.
- Half round dry ridge tiles smooth brown.
- Roof tiles to be Marley Eternit plain 267 x 165mm tiles smooth brown with bonnet hip and valley tiles to match.
- Black PVC-u rainwater goods, with gutters on rise and fall brackets.
- 4 Course eaves dentil detail in red class B semi engineering bricks to be two offset stretcher courses, one offset stepped header course and one stretcher course.
- Facing brickwork to be Michelmersh Clayburn Civic bricks.
- White PVC-u double glazed flush casement windows.
- Precast stone cill colour Bathstone
- Two ring red class B semi engineering brick on edge arch over external openings.
- White PVC-u double glazed flush casement windows
- Precast stone cill colour Bathstone
- Red class B semi engineering brickwork below dpc level.



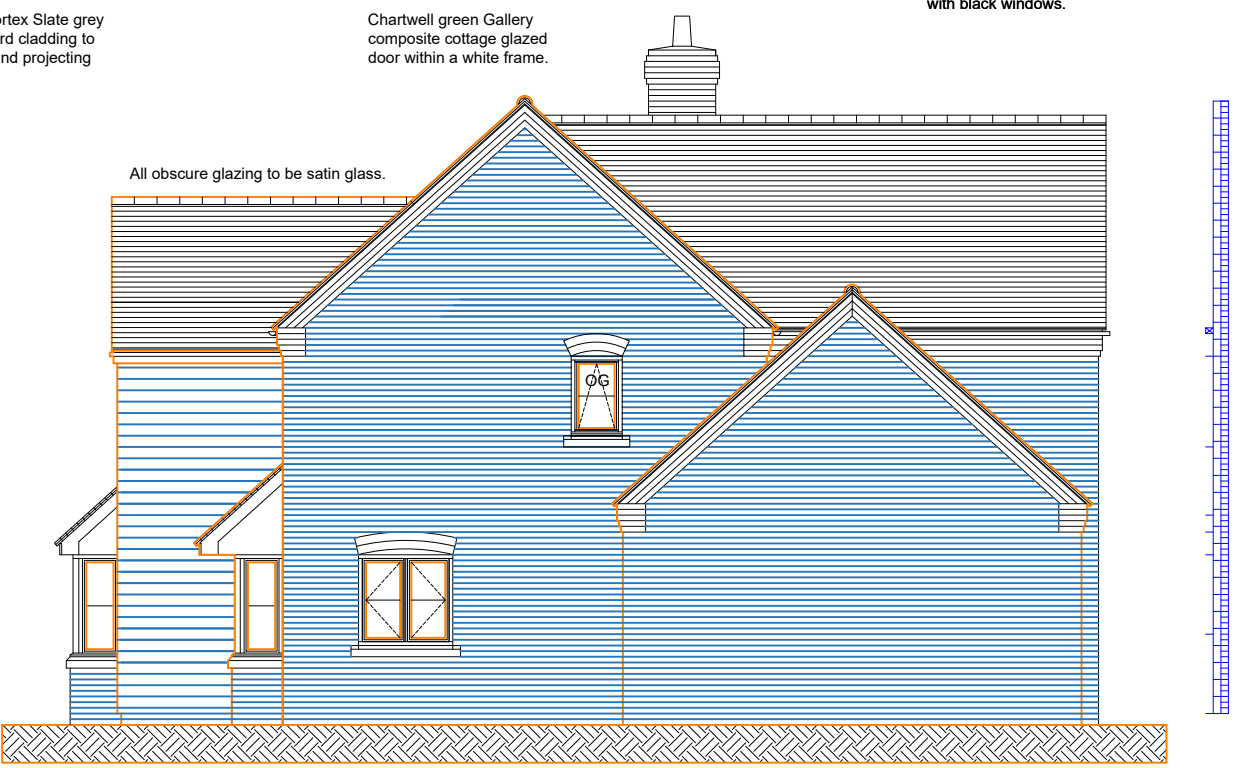
SIDE NORTH ELEVATION

Garador black Salisbury double garage door with black windows.

Freefoam Fortex Slate grey weather board cladding to front gable and projecting returns.

Chartwell green Gallery composite cottage glazed door within a white frame.

Freefoam Fortex Slate grey weather board cladding to front gable and projecting returns.



SIDE SOUTH ELEVATION



REAR WEST ELEVATION