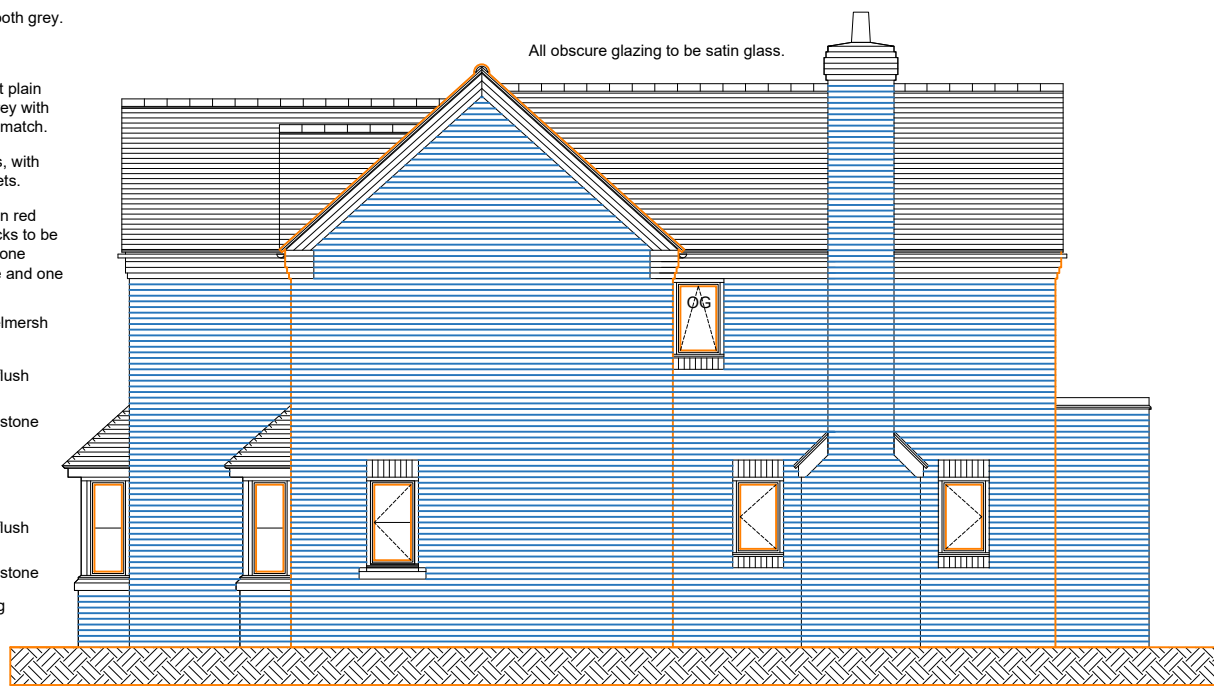




**FRONT EAST ELEVATION**

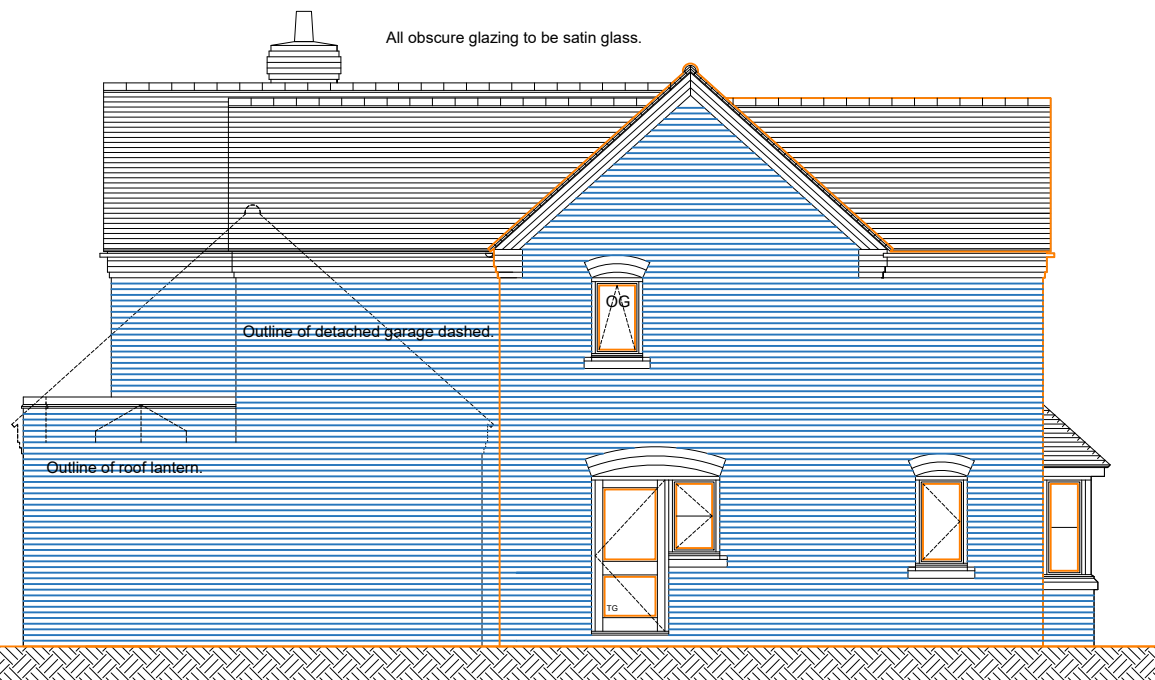
- Terracotta cannon chimney pot.
- Half round dry ridge tiles smooth grey.
- Roof tiles to be Marley Eternit plain 267 x 165mm tiles smooth grey with bonnet hip and valley tiles to match.
- Black PVC-u rainwater goods, with gutters on rise and fall brackets.
- 4 Course eaves dentil detail in red class B semi engineering bricks to be two offset stretcher courses, one offset stepped header course and one stretcher course.
- Facing brickwork to be Michelmersh Clayburn Civic bricks.
- White PVC-u double glazed flush casement windows.
- Precast stone cill colour Bathstone
- Two ring red class B semi engineering brick on edge arch over external openings.
- White PVC-u double glazed flush casement windows
- Precast stone cill colour Bathstone
- Red class B semi engineering brickwork below dpc level.



**SIDE NORTH ELEVATION**

Garador black Salisbury double garage door with black windows.

Blue Gallery composite cottage glazed door within a white frame.



**SIDE SOUTH ELEVATION**



**REAR WEST ELEVATION**

White aluminium double glazed bi-fold doors, all glass to be toughened.